

Adhesion and Signaling in Metastatic Melanoma

Julien Ablain, PhD

Cancer Research Center of Lyon (CRCL)

CNRS UMR5286 - Inserm U1052 - UCBL - CLB

28, rue Laennec

69373 Lyon Cedex 08

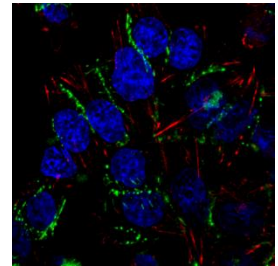
France

Julien.ablain@lyon.unicancer.fr

Re: Post-doctoral position available

A post-doctoral fellow position is available in the laboratory of Dr. Julien Ablain at the Cancer Research Center of Lyon, France (CRCL, <http://www.crcl.fr>).

The lab: The Ablain lab studies cancer biology, focusing on the role of adhesion signaling in melanoma metastasis. Understanding the interplay between cell adhesion and external signals from the tumor microenvironment in the regulation of cancer cell behaviors is critical to develop new therapies against metastatic tumors. We approach these mechanisms through genetics, pharmacology, *in vivo* imaging, cell biology and biochemistry using a combination of *in vivo* modeling in zebrafish, experiments in human cell lines and analyses of primary samples from human tumors. For a full description of the lab's research interests and approaches: <http://crcl.fr/785-Adhesion-and-signaling-in-metastatic-melanoma.crcl.aspx?language=en-GB>.



The position: We are seeking highly motivated candidates with experience in any related fields of biology to participate in the investigation of adhesion signaling in melanoma. Candidates with a background in cancer biology are strongly encouraged to apply. Experience with zebrafish is not required. Proficiency in English is expected. Initial contract will be 2 years with possibility of extension contingent upon securing an external fellowship. Start date is flexible. Candidates should send an email expressing their interest to julien.ablain@lyon.unicancer.fr. Please include your CV with contact information of at least 2 references.



This is a unique opportunity to participate in the growth and development of a new research team!